



FENDER FLARES

Assembly, Installation, Operation,
and Maintenance Instructions

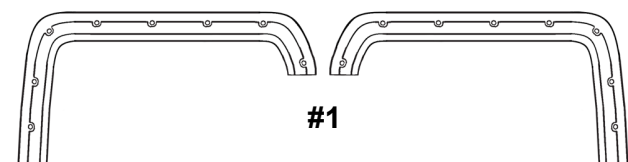
PART NUMBER	TFC3002S TFC3004S
INSTALL TIME	2-3 HOURS

PART NUMBER	VEHICLE FITMENT	BED LENGTH
TFC3002S	2014-2018 CHEVROLET SILVERADO 1500	COMPATIBLE WITH 6'5" AND 8'2" BED LENGTHS
	2014-2018 CHEVROLET SILVERADO 2500HD	
	2014-2018 CHEVROLET SILVERADO 3500HD	
TFC3004S	2014-2018 CHEVROLET SILVERADO 1500	COMPATIBLE WITH 5'7" BED LENGTH ONLY

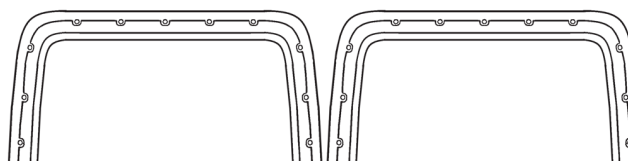
DEALER / INSTALLER	Provide a copy of these instructions to the end user of this product. These instructions provide important operating and safety information for proper usage of this product. Demonstrate the proper use of the product with the end user. Have the end user demonstrate that they understand the proper use of the product.
END USER	Read and follow all instructions included in this manual. Ask your Dealer/Installer for assistance if you do not understand the proper use of the product. Never remove any informational or warning labels from the product. Failure to follow these instructions can result in injury or death.

TOOLS REQUIRED (NOT INCLUDED)	
MEASURING TAPE OR RULER	#2 PHILLIPS DRIVE BIT
GREASE PENCIL OR MARKER	SOCKET WRENCH
ELECTRIC DRILL	3/32" DRILL BIT
T-15 TORX BIT	PRY TOOL

PACKAGE CONTENTS		
ITEM	PART DESCRIPTION	QTY
1	LEFT & RIGHT FRONT FLARES	1
2	LEFT & RIGHT REAR FLARES	1
3	EDGE TRIM TOOL	1
4	RUBBER EDGE TRIM	1
5	T-45 TORX BIT	1
6A	5/16"-18 STAINLESS STEEL SCREWS	39
6B	5/16"-18 BLACK STEEL SCREWS	39
7	5/16" STAINLESS STEEL WASHERS	39
8	5/16"-18 STAINLESS STEEL LOCKNUTS	39
9	#8 X 5/8" SELF TAPPING SCREWS	20
10	#8 X 3/4" TRUSS HEAD SCREWS	8



#1



#2



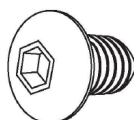
#3



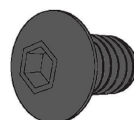
#4



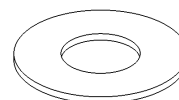
#5



#6A



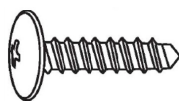
#6B



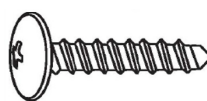
#7



#8



#9



#10

WARNINGS/SAFETY PRECAUTIONS



Use safety glasses and gloves as necessary when operating power tools.

Dirt and debris may become lodged between the fender flares and the vehicle's fenders, causing scratching and paint wear from vibrations. Keystone Automotive Operations, Inc. is not responsible for any vehicle damage, and customer accepts all associated risks.

Do not over-tighten any screws. Over-tightening may result in stress fractures in the fender flares.

PRIOR TO INSTALLATION:

Thoroughly clean installation area on the vehicle.

Verify contents of box.

Read instructions thoroughly.

Use caution to avoid scratching the fender flare and vehicle.

Verify proper fitment of fender flares to the vehicle. If the vehicle has oversized tires, ensure that the fender flares will not interfere with the tires. It may be necessary to lower bump stops or install steering stops.

Do not use alternative installation methods or materials, such as superglue or Loctite.

If applicable, remove existing fender flares and mud flaps.

Verify that installed fender flares will maintain at least 4 inches of clearance from exhaust pipes. Exhaust gases that discharge onto fender flare surfaces will cause heat distortion and may require modifications to remedy.

PAINTING (OPTIONAL):

NOTE: Painting is optional and should only be attempted on fender flares with smooth outer surfaces. Fender flares with textured outer surfaces should not be painted. Painted fender flares cannot be returned.

1. Clean fender surface with a high-quality degreaser.

NOTE: Do not use any solvent-based product such as lacquer thinner.

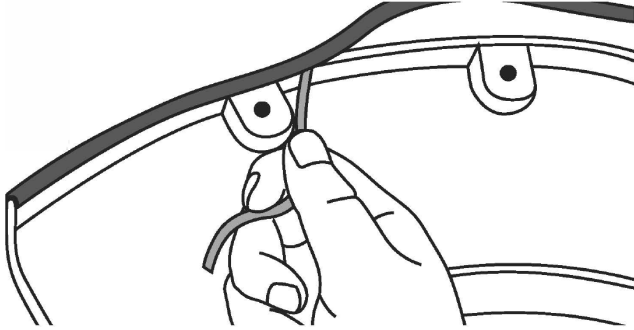
2. Wipe surface thoroughly with a tack rag.

3. Paint fender flares with a high-quality paint lacquer, enamel, or polyurethane automotive paint.

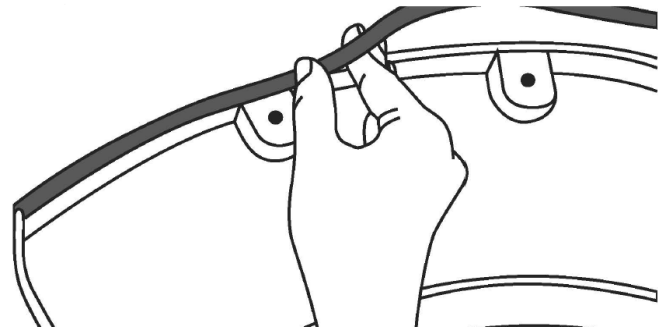
4. If painting edge trim (not recommended), use a flex additive.

EDGE TRIM INSTALLATION

1. Peel 2-3 inches of red tape liner away from the edge trim tape (#4). Apply the adhesive surface of the edge trim to the inner surface of the flare. Install edge trim to the outside perimeter of the fender flare (the portion that physically contacts the vehicle). **(IMAGE 1)**
2. Press the edge trim into place along the top edge of the fender flare while simultaneously pulling away the red tape liner. Continue to work along the entire outside perimeter of the fender flare. **(IMAGE 2)**



(IMAGE 1)



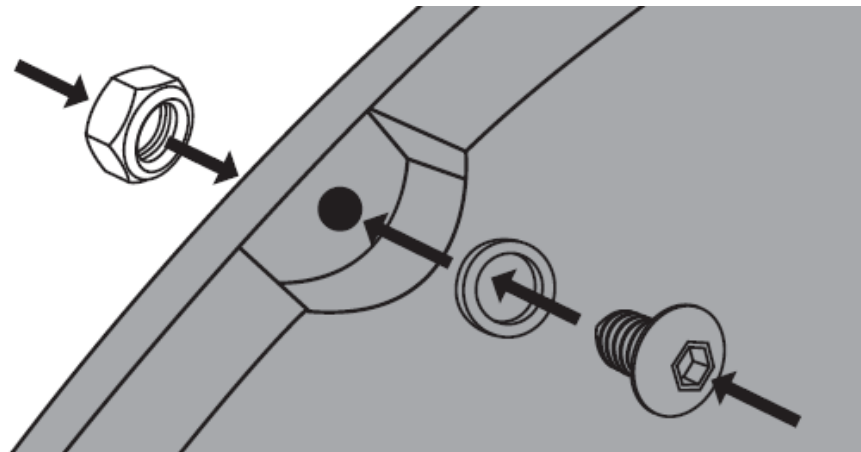
(IMAGE 2)

3. Cut the rubber edge trim to length when the installation is complete.
4. Repeat steps 1-3 for each fender flare.

COSMETIC SCREW INSTALLATION

Install a 5/16"-18 screw (#6A or #6B) and washer (#7) into each pocket hole along the outer edge of the fender flare. Secure with a locknut (#8) using a wrench and Torx bit (#5). Repeat for each fender flare. **(IMAGE 3)**

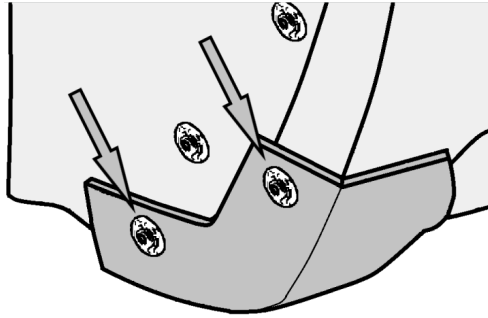
NOTE: Cosmetic 5/16"-18 screws are provided in both stainless and black steel finishes. You may use whichever finish you prefer.



(IMAGE 3)

FRONT FLARE INSTALLATION

1. If installing the front driver side flare, turn the steering wheel fully to the left before beginning. For the front passenger side flare, turn the steering wheel fully to the right.
2. Using a T-15 Torx bit, remove two original factory screws in the mudguard at the rear of the front wheel well. **(IMAGE 4)**

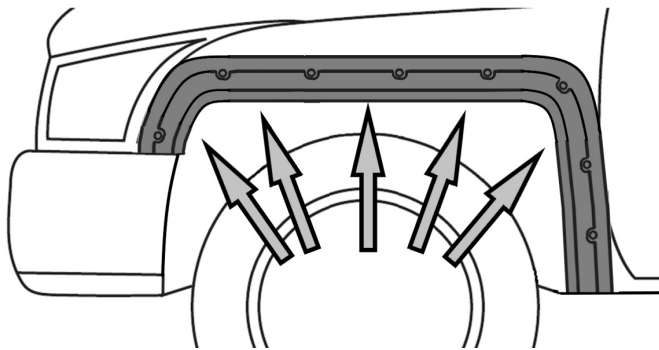


(IMAGE 4)

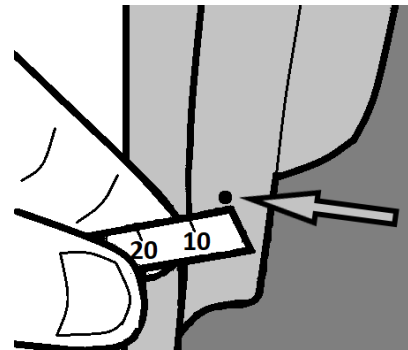
3. Position the front fender flare (#1) in place to line up the holes on the flare with the original vehicle holes.
4. Loosely install #8 x 3/4" truss head screws (#10) through the two bottom rear holes in the flare and through the original factory holes in the rear of the wheel well as indicated in **(IMAGE 4)**.

NOTE: Do not tighten screws.

5. Hold the front of the flare firmly on the vehicle fender. Ensure that the front of the flare is aligned with the front bumper's style line. Using a marker or grease pencil, mark five (5) hole positions where each indicated fender flare hole is located along the lip of the wheel well. **(IMAGE 5)**
6. Remove previously installed screws and remove the flare. At the five marked locations, measure inward 10mm from the edge of the fender. Mark these new locations. These marks are the drill locations. **(IMAGE 6)**



(IMAGE 5)



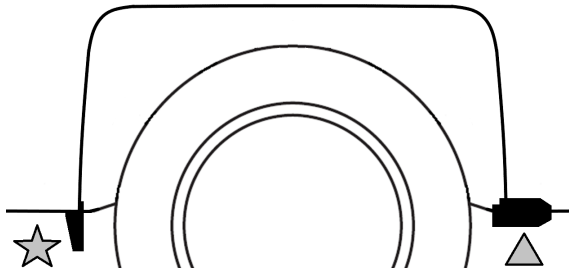
(IMAGE 6)

7. Using a 3/32" drill bit, drill pilot holes at the marks made in the previous step.
8. Repeat steps 3 and 4.
9. Install #8 X 5/8" self tapping screws (#9) into the five pilot holes. Tighten all screws.
10. Repeat steps 1-9 for the remaining front fender flare.

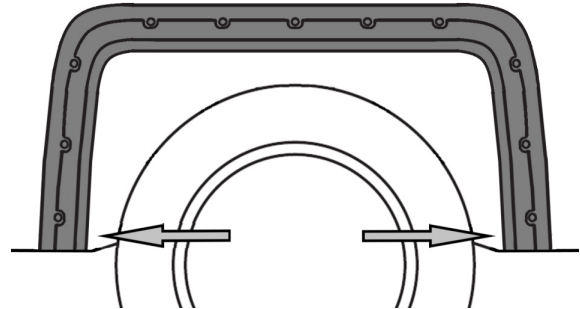
REAR FLARE INSTALLATION

1. Using a T-15 Torx bit, remove four original factory screws to detach the plastic mud flap piece which is indicated by a star symbol in **(IMAGE 7)**. Reinstall two of those factory screws back into the original factory holes in the wheel well liner.
2. Using a pry tool, remove the original factory retainers installed in the bottom of the factory mudguard which is indicated by a triangle symbol in **(IMAGE 7)**. Remove and discard the mudguard.
3. Hold the flare in position against the vehicle with moderate pressure. Loosely install #8 x 3/4" truss head screws (#10) through the two lowermost holes in the flare and through the original factory holes in the rear of the wheel well as indicated in **(IMAGE 8)**.

NOTE: Do not tighten screws.

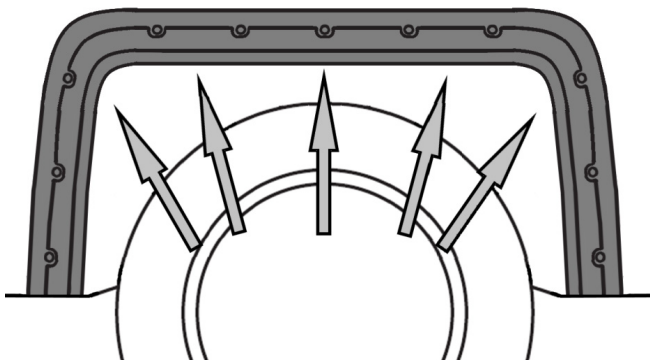


(IMAGE 7)

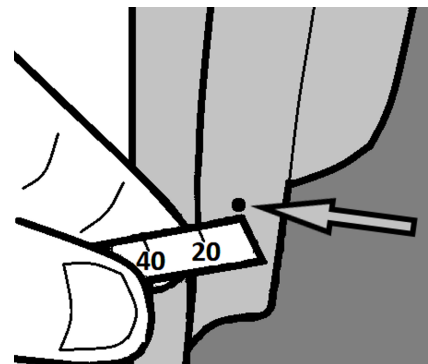


(IMAGE 8)

4. Using a marker or grease pencil, mark five (5) hole positions where each indicated fender flare hole is located along the lip of the wheel well. **(IMAGE 9)**
5. Remove previously installed screws and remove the flare. At the five marked locations, measure inward 22mm from the edge of the fender. Mark these new locations. These marks are the drill locations. **(IMAGE 10)**



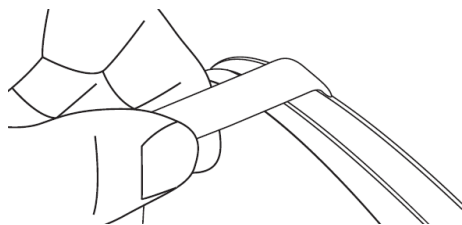
(IMAGE 9)



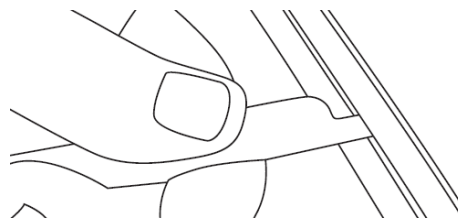
(IMAGE 10)

6. Using a 3/32" drill bit, drill pilot holes at the marks made in the previous step.
7. Repeat step 3.
8. Install #8 X 5/8" self tapping screws (#9) into the five pilot holes. Tighten all screws.
9. Repeat steps 1-8 for the remaining rear fender flare.

NOTE: The edge trim tool (#3) may be used after fender flare installation is complete to improve fitment as illustrated. **(IMAGES 11, 12)**



(IMAGE 11)



(IMAGE 12)

CONTACT US

WEBSITE: TrailFX.com

PHONE: 1-866-638-4870

EMAIL: support@trailfx.com

WARRANTY INFORMATION

Limited Lifetime Warranty:

Keystone Automotive Operations (KAO) warrants this product to be free of defects in material and workmanship at the time of purchase by the original retail consumer. KAO disclaims any other warranties, express or implied, including the warranty of fitness for a particular purpose or an intended use. If the product is found to be defective, KAO may replace or repair the product at our option, when the product is returned prepaid, with proof of purchase. Alteration to, improper installation, or misuse of this product voids the warranty. KAO's liability is limited to repair or replacement of products found to be defective, and specifically excludes liability for any incidental or consequential loss or damage.